

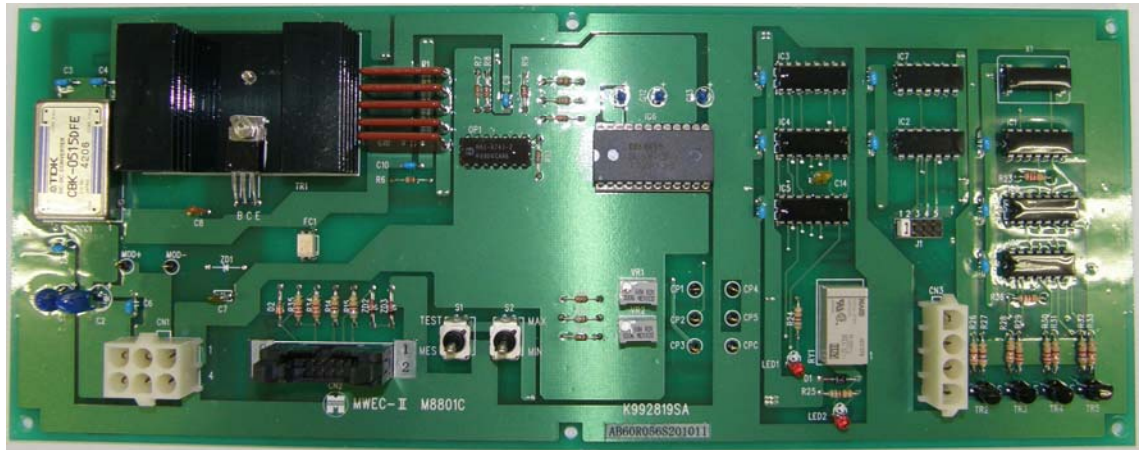
● Modulator Driver Circuit Board (MVEC- II board)

The modulator driver circuit generates and transmits modulating triangular wave signals to the microwave oscillator in the microwave circuit box.

It also generates modulation timing signals (trigger signals) and transmits them to the main board via the beat signal input circuit board in the signal processing unit.

The modulator driver circuit comprises a circuit to convert the abnormal temperature signal (sent from the abnormal temperature detection circuit in the microwave circuit box) to a contact signal to turn OFF the oscillator power supply and protect the oscillator against abnormal temperature.

It also transmits the abnormal temperature signal to the signal processing unit at the same time.



O	作成	24.8.2015	岩本	重枝
REV.No.	REVISION	DATE	CHECK' D	APP' D
MESSRS. ORDER NO. EST.NO. ACCEPT NO.	TITLE Modulator Driver Circuit Board (MVEC- II board)	DWG.No. <b>C47B0124</b>		REV.No. <b>O</b>